

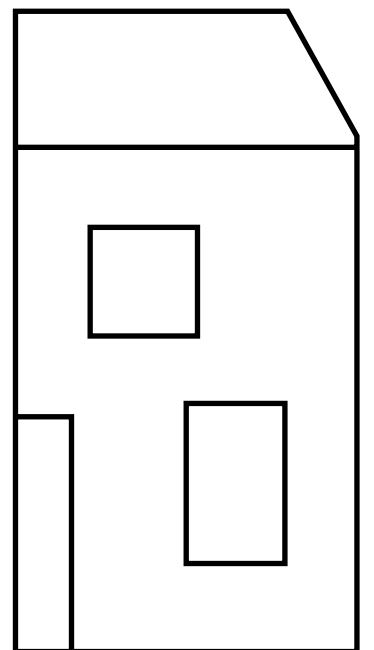
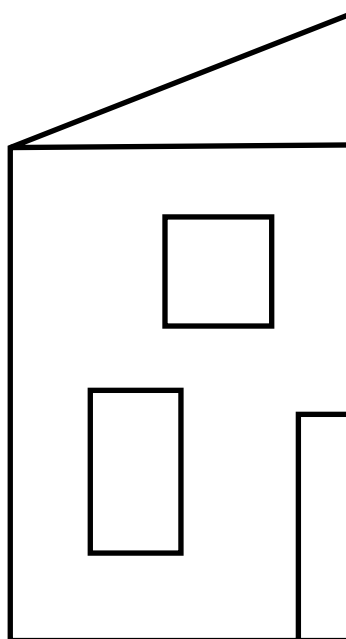
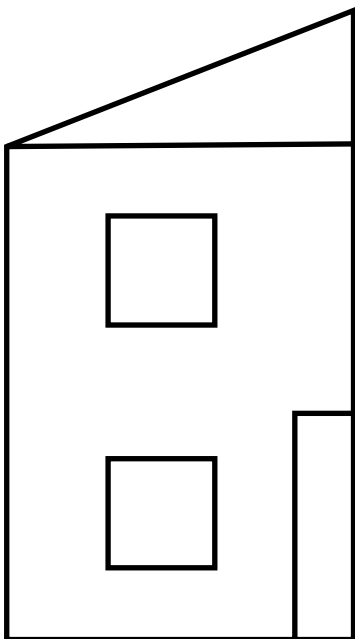
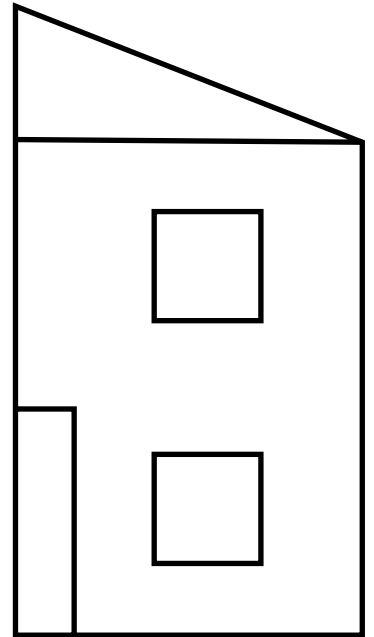
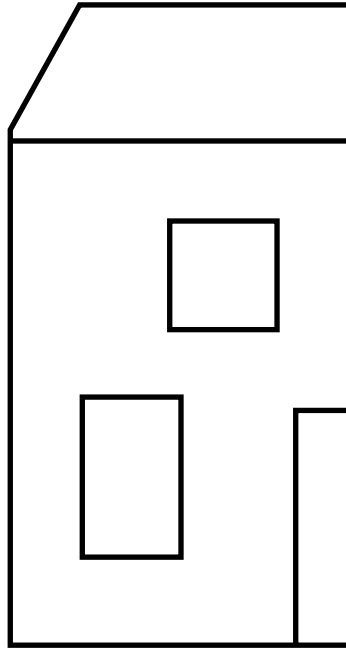
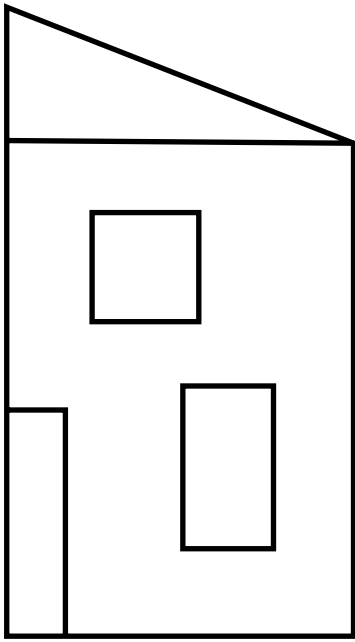


# Symmetrical Homes

I can recognise line symmetry.



Cut out these 6 half houses. Join pairs to make houses with symmetry.



Use blank paper to draw your own pairs of half houses with symmetry.

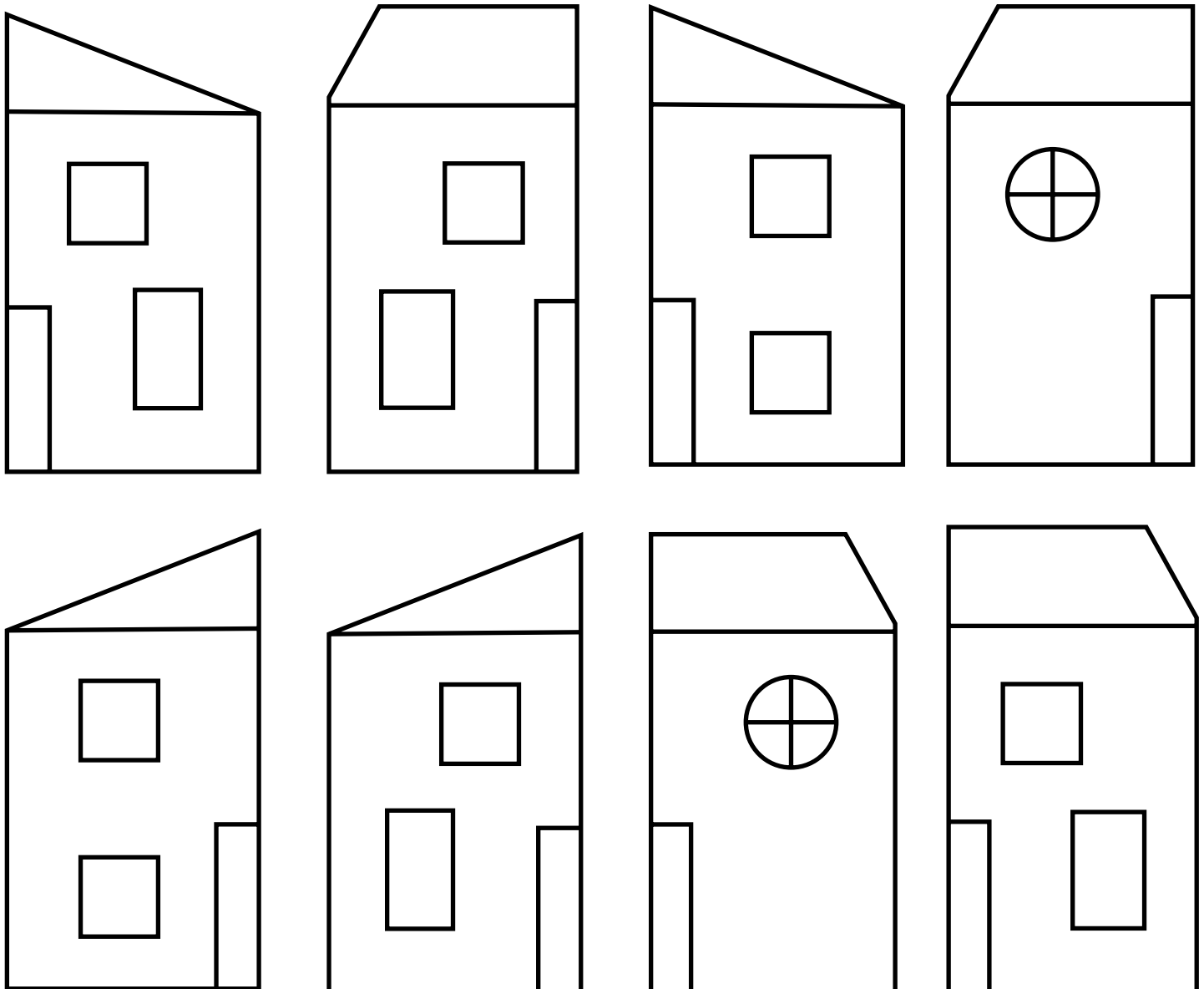


# Symmetrical Homes

I can recognise line symmetry.



Cut out these 8 half houses. Join pairs to make houses with symmetry.



Use blank paper to draw your own pairs of half houses with symmetry.

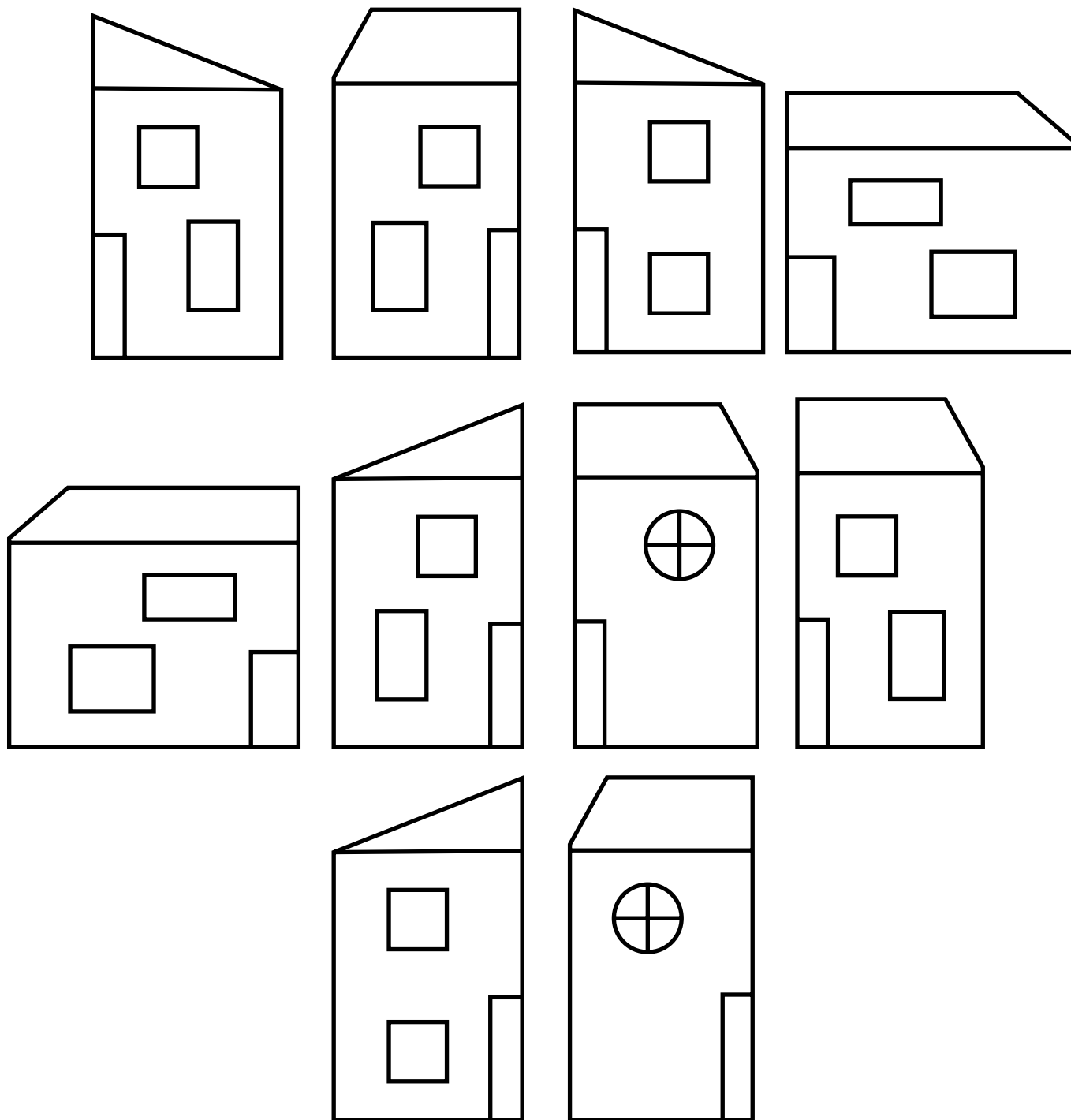


# Symmetrical Homes

I can recognise line symmetry.



Cut out these 10 half houses. Join pairs to make houses with symmetry.



Use blank paper to draw your own pairs of half houses with symmetry.