

Addition and Subtraction

Code Breaker

Use the code breaker to reveal the answers to the BBC Children in Need trivia and jokes.

a	b	c	d	e	f	g	h	i	j	k	l	m
234	235	236	237	238	239	240	241	242	243	244	245	246

n	o	p	q	r	s	t	u	v	w	x	y	z
247	248	249	250	251	252	253	254	255	256	257	258	259

On which day, in 1927, was the first five-minute BBC Children in Need radio broadcast appeal?

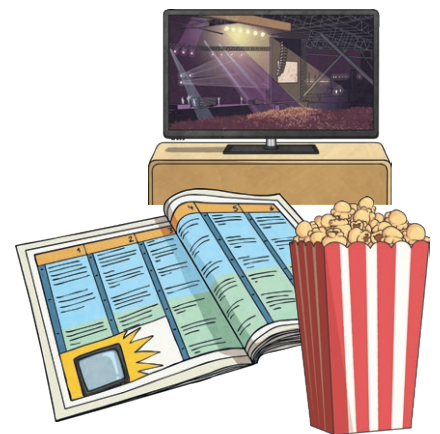
	$230 + 6$	$250 - 9$	$245 + 6$	$250 - 8$	$250 + 2$	$260 - 7$	$242 + 4$	$240 - 6$	$247 + 5$
Answer									
Letter									

	$231 + 6$	$237 - 3$	$252 + 6$
Answer			
Letter			

What is the name of the legendary BBC Children in Need presenter who fronted the telethons from 1978 until 2014?

	$202 + 50$	$212 + 30$	$201 + 50$	$223 + 30$	$258 - 20$	$211 + 40$	$301 - 50$	$218 + 40$
Answer								
Letter								

	$316 - 60$	$198 + 50$	$300 - 60$	$214 + 20$	$287 - 40$
Answer					
Letter					



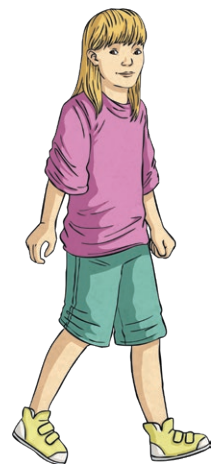
Addition and Subtraction Code Breaker

a	b	c	d	e	f	g	h	i	j	k	l	m
234	235	236	237	238	239	240	241	242	243	244	245	246
n	o	p	q	r	s	t	u	v	w	x	y	z
247	248	249	250	251	252	253	254	255	256	257	258	259

How was Pudsey Bear told to start the sponsored walk?

	951 - 700	738 - 500	834 - 600	437 - 200	958 - 700
Answer					
Letter					

	230 + 23	220 + 18	230 + 7	210 + 27	208 + 50	231 + 9	238 + 10
Answer							
Letter							



Addition and Subtraction

Code Breaker - Answers

Use the code breaker to reveal the answers to the BBC Children in Need trivia and jokes.

a	b	c	d	e	f	g	h	i	j	k	l	m
234	235	236	237	238	239	240	241	242	243	244	245	246

n	o	p	q	r	s	t	u	v	w	x	y	z
247	248	249	250	251	252	253	254	255	256	257	258	259

On which day, in 1927, was the first five-minute BBC Children in Need radio broadcast appeal?

	$230 + 6$	$250 - 9$	$245 + 6$	$250 - 8$	$250 + 2$	$260 - 7$	$242 + 4$	$240 - 6$	$247 + 5$
Answer	236	241	251	242	252	253	246	234	252
Letter	C	h	r	i	s	t	m	a	s

	$231 + 6$	$237 - 3$	$252 + 6$
Answer	237	234	258
Letter	D	a	y

What is the name of the legendary BBC Children in Need presenter who fronted the telethons from 1978 until 2014?

	$202 + 50$	$212 + 30$	$201 + 50$	$223 + 30$	$258 - 20$	$211 + 40$	$301 - 50$	$218 + 40$
Answer	252	242	251	253	238	251	251	258
Letter	S	i	r	T	e	r	r	y

	$316 - 60$	$198 + 50$	$300 - 60$	$214 + 20$	$287 - 40$
Answer	256	248	240	234	247
Letter	W	o	g	a	n

Addition and Subtraction Code Breaker - Answers

How was Pudsey Bear told to start the sponsored walk?

	$951 - 700$	$738 - 500$	$834 - 600$	$437 - 200$	$958 - 700$
Answer	251	238	234	237	258
Letter	R	e	a	d	y

	$230 + 23$	$220 + 18$	$230 + 7$	$210 + 27$	$208 + 50$	$231 + 9$	$238 + 10$
Answer	253	238	237	237	258	240	248
Letter	t	e	d	d	y	g	o