

Maths Mastery

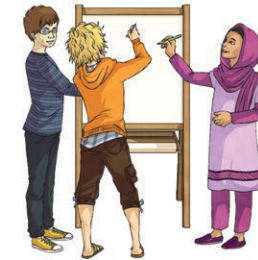
Simplify Fractions and
Common Denominators

Challenge Cards



Maths Mastery

1. Use Common Factors to Simplify Fractions
Explain how you would use the common factors of 24 and 30 to express $\frac{24}{30}$ in its simplest form.



Maths Mastery

2. Convert these fractions into the simplest form; write the highest common factor with your answer:

$$\frac{14}{24}$$

$$\frac{21}{30}$$

$$\frac{25}{40}$$

$$\frac{16}{28}$$

$$\frac{24}{64}$$

$$\frac{36}{81}$$

$$\frac{36}{132}$$



Write some for a partner.



Maths Mastery

3. Explain how to use common multiples to express two fractions that have different denominators (e.g. $\frac{1}{4}$ and $\frac{2}{5}$) as ones with the same denominator. Use your own example fractions.



4. Express the following pairs of fractions with the same denominator.

$$\frac{24}{30} \text{ and } \frac{1}{5}$$

$$\frac{3}{8} \text{ and } \frac{2}{3}$$

$$\frac{7}{10} \text{ and } \frac{3}{4}$$

$$\frac{2}{5} \text{ and } \frac{11}{12}$$

$$\frac{1}{4} \text{ and } \frac{4}{15}$$

$$\frac{3}{10} \text{ and } \frac{7}{18}$$

Write some of your own pairs for a partner to express with the same denominator.