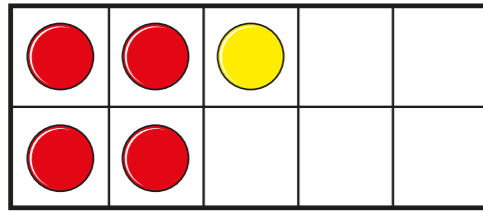
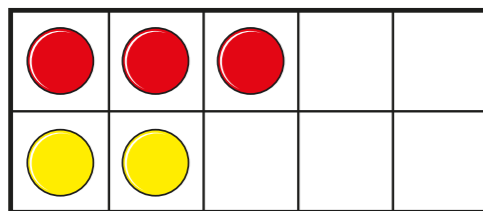


Know your number bonds

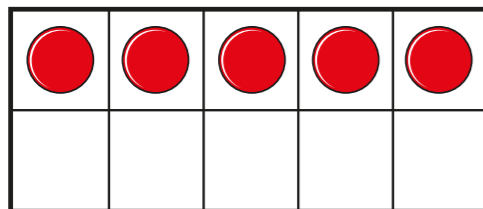
1 Use the diagrams to complete the bonds to 5



$$\square + \square = 5$$

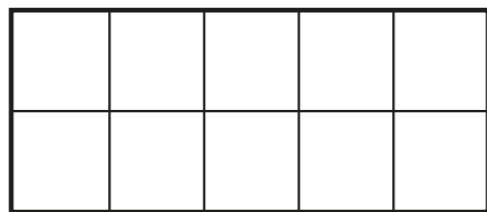


$$\square + \square = 5$$



$$\square + \square = 5$$

2 Take 6 counters. Draw them on the ten frame.



Make and write the bonds to 6

$$\square + \square = 6$$

$$\square + \square = 6$$

$$\square + \square = 6$$

$$\square + \square = 6$$

$$\square + \square = 6$$

$$\square + \square = 6$$

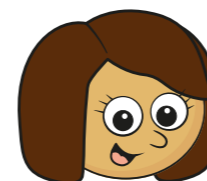
3 a) Shade all the bonds to 4

3 + 1	1 + 3	5 + 2
0 + 4	2 + 2	4 + 1

b) Shade all the bonds to 7

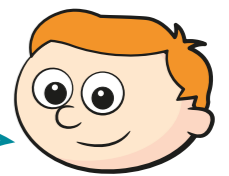
2 + 4	5 + 2	4 + 3
0 + 7	3 + 3	3 + 4
1 + 6	2 + 7	6 + 1

4 Who has 8 apples?



Kim

I have 7 red apples and 2 green apples.



Ron

I have 6 red apples and 2 green apples.

5 Here are some cards showing number bonds.

$2 + 8$	$3 + 6$	$5 + 5$	$7 + 2$
$3 + 7$	$4 + 5$	$8 + 1$	$6 + 4$

a) Sort the cards into the table.

Bonds to 9	Bonds to 10

b) Write some more bonds to 9 and 10 in the table.

6 Complete the bonds.

a) $\square + 5 = 8$	c) $8 + \square = 10$
b) $3 + \square = 3$	d) $3 + \square = 5$

e) $\square + 2 = 8$	h) $\square + 4 = 8$
f) $\square + 1 = 10$	i) $\square + 5 = 9$
g) $5 + \square = 7$	j) $4 + \square = 6$

7 Work out the value of each shape.

$$\star + \star = 10$$

$$\heartsuit + \heartsuit = 6$$

$$\star + \heartsuit = \blacktriangle$$

$\star = \square$	$\heartsuit = \square$	$\blacktriangle = \square$
-------------------	------------------------	----------------------------

