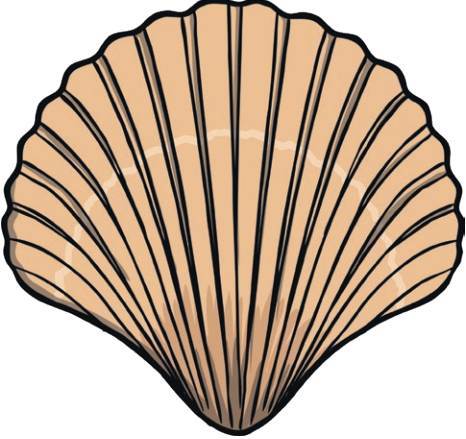

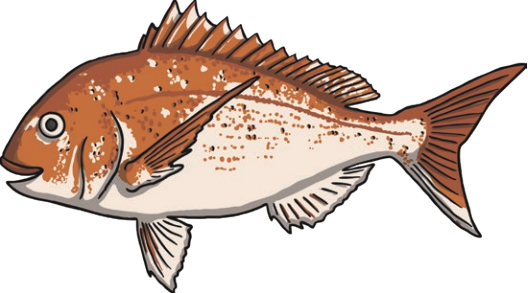


Phase 3 - Circle That Word!

Circle the word that matches the picture.

	<p>well chell</p> <p>bell shell</p>
	<p>ting sing</p> <p>ling ping</p>
	<p>kish fish</p> <p>tish wish</p>

Phase 3 - Circle That Word!

Circle the word that matches the picture.



jath

lath

path

bath



sing

bing

ling

king



thair

shair

chair

fair

Phase 3 - Circle That Word!

Circle the word that matches the picture.

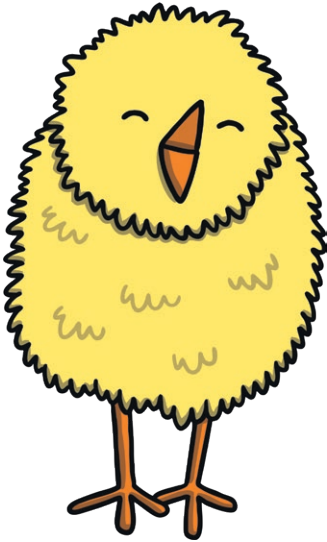
3

tree

three

shee

flee



thick

kick

chick

wick



ding

ring

thing

wing