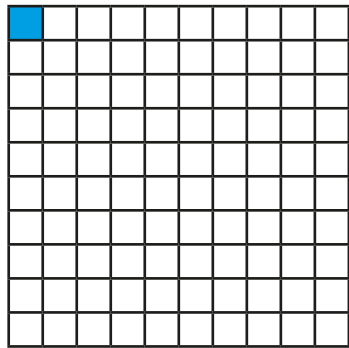
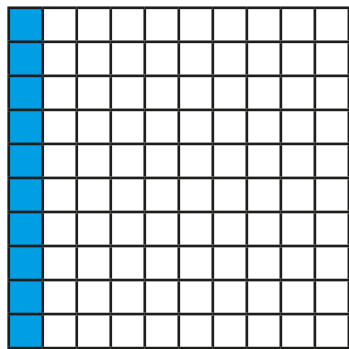


Equivalent FDP

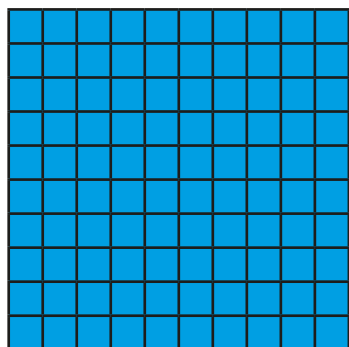
1 What fraction, decimal and percentage of each grid is shaded blue?



fraction = $\frac{1}{100}$
 decimal = 0.01
 percentage = 1%

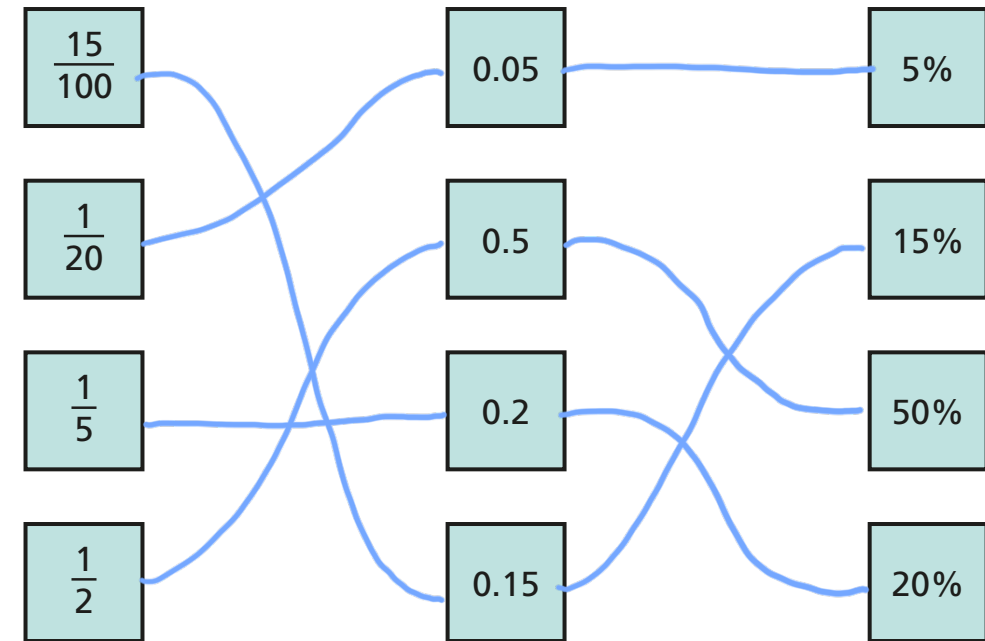


fraction = $\frac{1}{10}$
 decimal = 0.1
 percentage = 10%

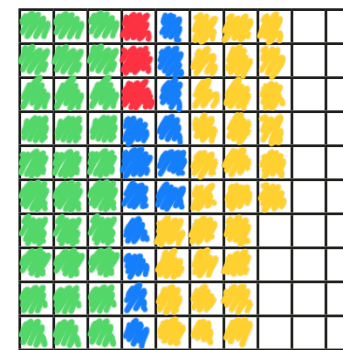


fraction = $\frac{100}{100}$
 decimal = 1
 percentage = 100%

2 Match the equivalent fractions, decimals and percentages.



3 a) Shade the grid in the given proportions.



- $\frac{3}{10}$ green
- 0.03 red
- 13% blue
- 0.3 yellow

b) What proportion of the grid is unshaded?
 Write your answer as a fraction, decimal and percentage.

fraction = $\frac{6}{25}$ decimal = 0.24 percentage = 24%

4 Complete the table.

Fraction	Decimal	Percentage
$\frac{21}{100}$	0.21	21%
$\frac{3}{25}$	0.12	12%
$\frac{2}{10}$	0.2	20%
$\frac{2}{5}$	0.4	40%
$\frac{11}{25}$	0.44	44%
$\frac{1}{25}$	0.04	4%
$\frac{3}{4}$	0.75	75%
$\frac{99}{100}$	0.99	99%

5 Amir was asked to complete the statement using $<$, $>$ or $=$.

14% $>$ 0.4

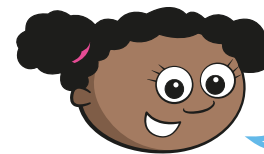


14 is greater than 4

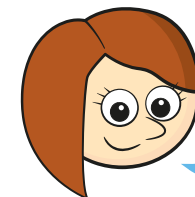
What mistake has Amir made?

He hasn't compared them in the same form. $0.4 = 40\%$
and $40\% > 14\%$ so $14\% < 0.4$

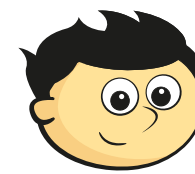
6 Match the decimal cards to the people.



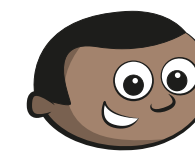
My decimal is $\frac{4}{10}$ less than 100%.



My decimal cannot be simplified when it is written as a fraction.



My decimal is 10% less than $\frac{3}{4}$



My decimal is greater than 60%.

0.65

0.57

0.61

0.6

7 Use the digit cards to write a decimal greater than $\frac{1}{5}$ but less than 40%.

You may not use a card more than once in each number.



Eg. 0.24

How many other answers can you find?

